

# TR 22-45 – Flowchart Addition of C and R Gathering Lines

2023 – November 15 – Editorial Section

Approved revisions to guide material under §192.8. **Ready to Recirculate for 2<sup>nd</sup> LB.**

<b>TR Number</b>	<b>2022-45</b>
<b>Primary Reference</b>	192.8
<b>Secondary Reference</b>	192.9
<b>Purpose</b>	Review and revise flow chart in GM192.8 to address Type C gathering lines
<b>Origin/Rationale</b>	
<b>Assigned to</b>	Design TG

**Recirculation Letter Ballot Notes:** Letter Ballot LB4-2023 results were: 32 Approved, 2 Approved with comment, 0 Disapproved. The proposed change from LB4-2023 is to change text in a flow chart box from “Per table under §192.8(b)(2) ...” to “Per table under §192.8(c)(2) ...”. The corrected flow chart was in a .jpg file in the November 2023 Meeting TR Space, which was used to replace flow chart in LB4-2023 version as shown below.

## Section 192.8

1 **DEFINITION**

...

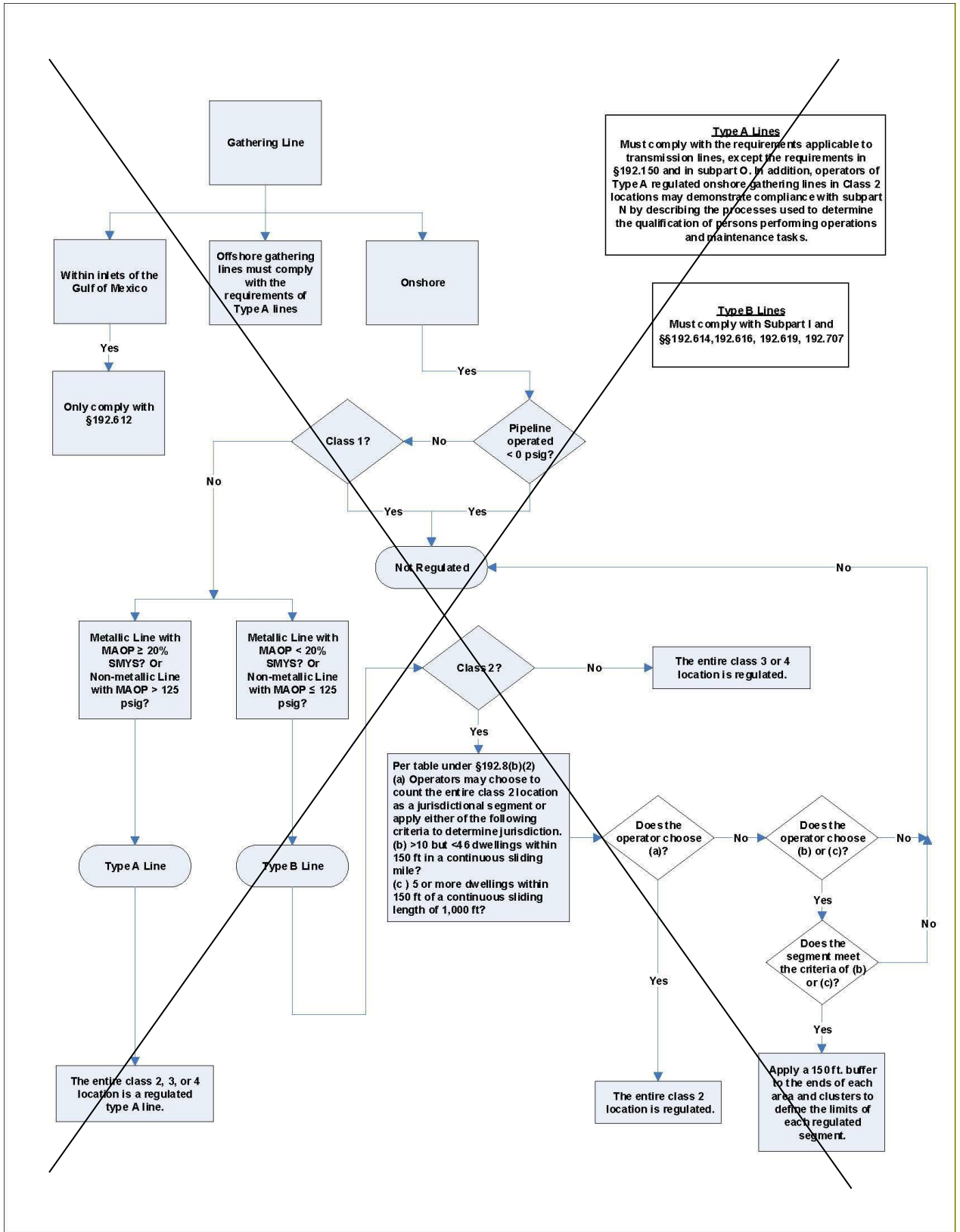
2 **TYPE OF GATHERING LINE**

...

3 **FLOW CHART**

The following flow chart (Figure 192.8C) is to assist operators in identifying the type of gathering line and the requirements to be followed for that type of line.

# TR 22-45 – Flowchart Addition of C and R Gathering Lines



Gathering Lines – Type A, B, C, or R

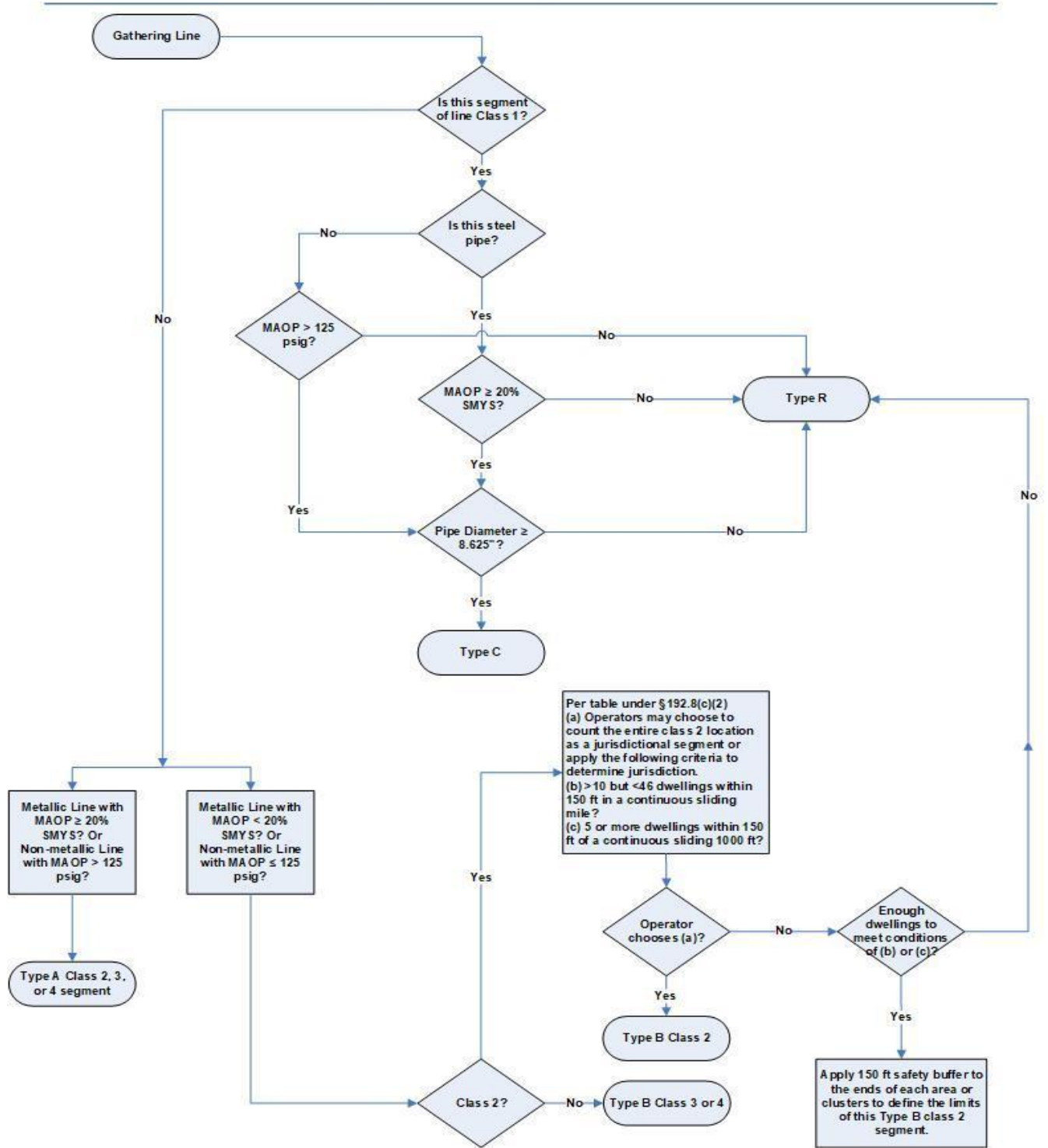


FIGURE 192.8C

[2<sup>nd</sup> LB Note: Text in box changed from “Per table under §192.8(b)(2)” to “Per table under §192.8(c)(2)”.]