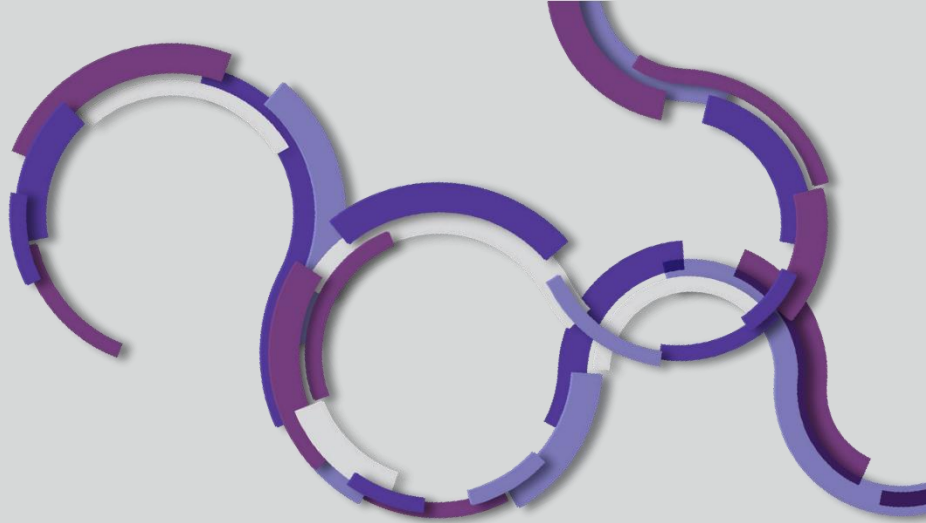
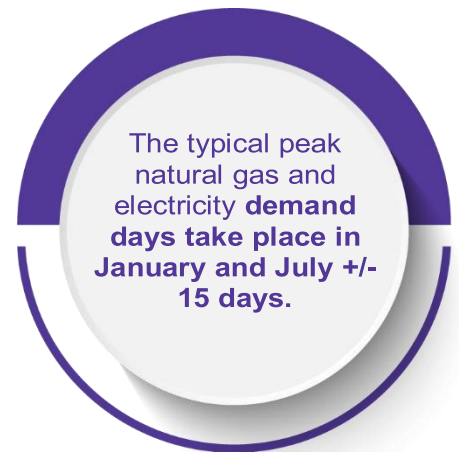
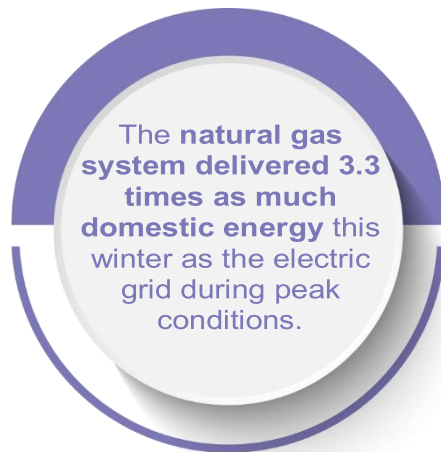
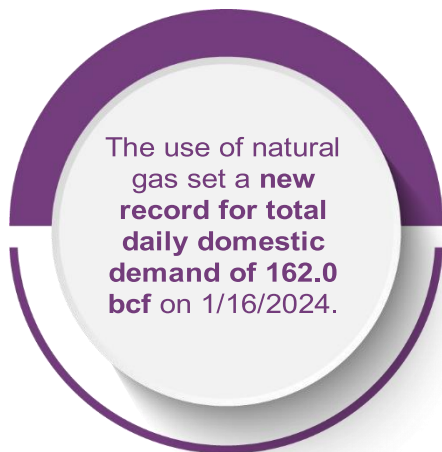


# Energy Insights



## Peak Daily Domestic Demand for Natural Gas and Electricity

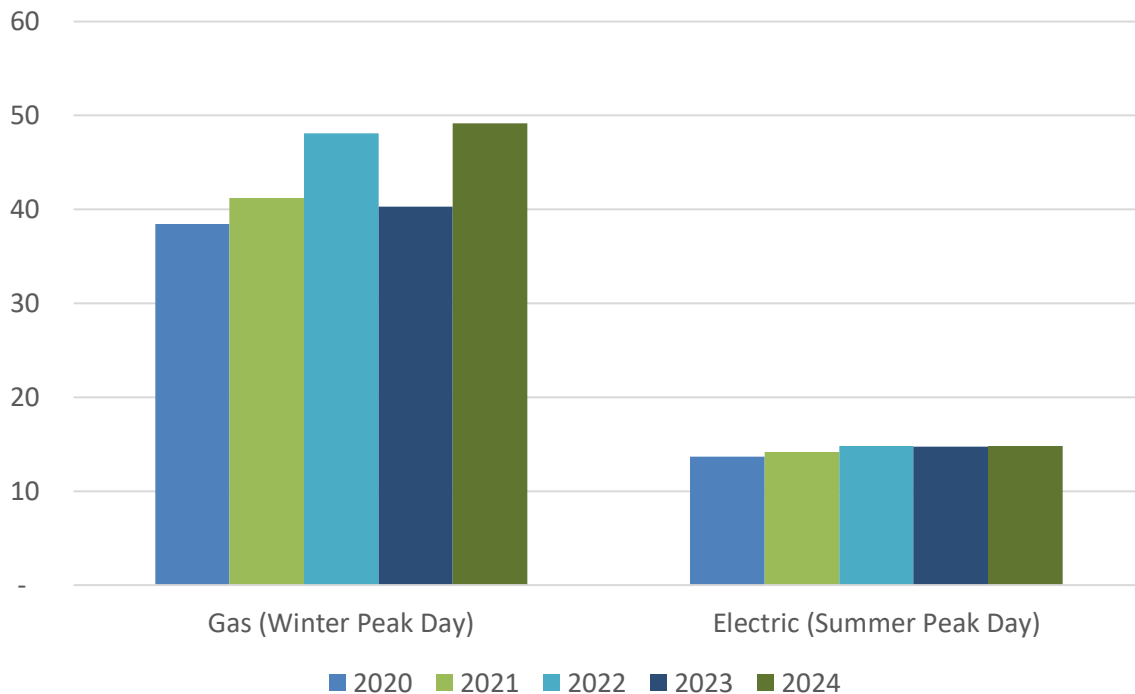


- The natural gas system set a record for total daily domestic demand of 162.0 Bcf on 1/16/2024. This was a significant increase over the record previously set on 12/24/2022 when total daily demand reached 158.4 Bcf.
- Domestic demand only includes power generation, residential, commercial, and industrial end users. Additional natural gas demand for feedgas for liquefied natural gas exports and pipeline exports to Mexico were not included.
- During the 2020, 2021, and 2023 winter heating seasons, peak day demand was lower than in recent years due to both demand impacts from the ongoing global pandemic as well as back-to-back winters with warmer-than-average national temperatures.
- During the hottest day in the summer when cooling demand will be at its highest, the electric grid set a record of 14,843 GWh in total sales compared to last year's record of 14,769 GWh. Approximately 45% of electricity supplied on 7/15/2024 was from natural gas power generation.
- Converting the two sources of energy to total daily GWh, the record demand day for gas was 49,182 GWh compared to 14,843 GWh for electricity. This demonstrates that the gas distribution system on the coldest days can supply 3.3 times as much energy per 24-hour period as the electric grid on the hottest days. Residential and commercial users accounted for 44% of natural gas delivered on 1/16/2024 or 1.5 times as much energy as the electric grid supplied during the peak summer day.

## Supplemental Materials

Year	Date	Gas Peak Day GWh	Date	Electric Peak Day GWh
2024	1/16/2024	49,182,150	7/15/2024	14,842,492
2023	2/3/2023	40,303,039	7/27/2023	14,768,579
2022	12/24/2022	48,084,254	7/20/2022	14,798,640
2021	2/14/2021	41,206,920	8/12/2021	14,192,700
2020	1/20/2020	38,481,309	7/20/2020	13,690,970

Peak Natural Gas\* Delivered and Electricity Daily Sales  
 Thousand GWh of Energy per Day



\*Natural gas volumes delivered for all end-use consumers were converted from MMBtu to GWh for comparison only and do not reflect natural gas use in generation.

Source: Based on data from Energy Information Administration and S&P Global Platts Commodity Insights.  
 AGA Contact: Brendan O'Brien (bobrien@aga.org) 202-824-7220.

**Notice**

In issuing and making this publication available, AGA is not undertaking to render professional or other services for or on behalf of any person or entity. Nor is AGA undertaking to perform any duty owed by any person or entity to someone else. Anyone using this document should rely on his or her own independent judgment or, as appropriate, seek the advice of a competent professional in determining the exercise of reasonable care in any given circumstances. The statements in this publication are for general information and represent an unaudited compilation of statistical information that could contain coding or processing errors. AGA makes no warranties, express or implied, nor representations about the accuracy of the information in the publication or its appropriateness for any given purpose or situation. This publication shall not be construed as including advice, guidance, or recommendations to take, or not to take, any actions or decisions on any matter, including without limitation, investments or the purchase or sale of any securities, shares or other assets of any kind. Should you take any such action or decision; you do so at your own risk. Information on the topics covered by this publication may be available from other sources, which the user may wish to consult for additional views or information not covered by this publication.

Copyright © 2024 American Gas Association. All rights reserved.